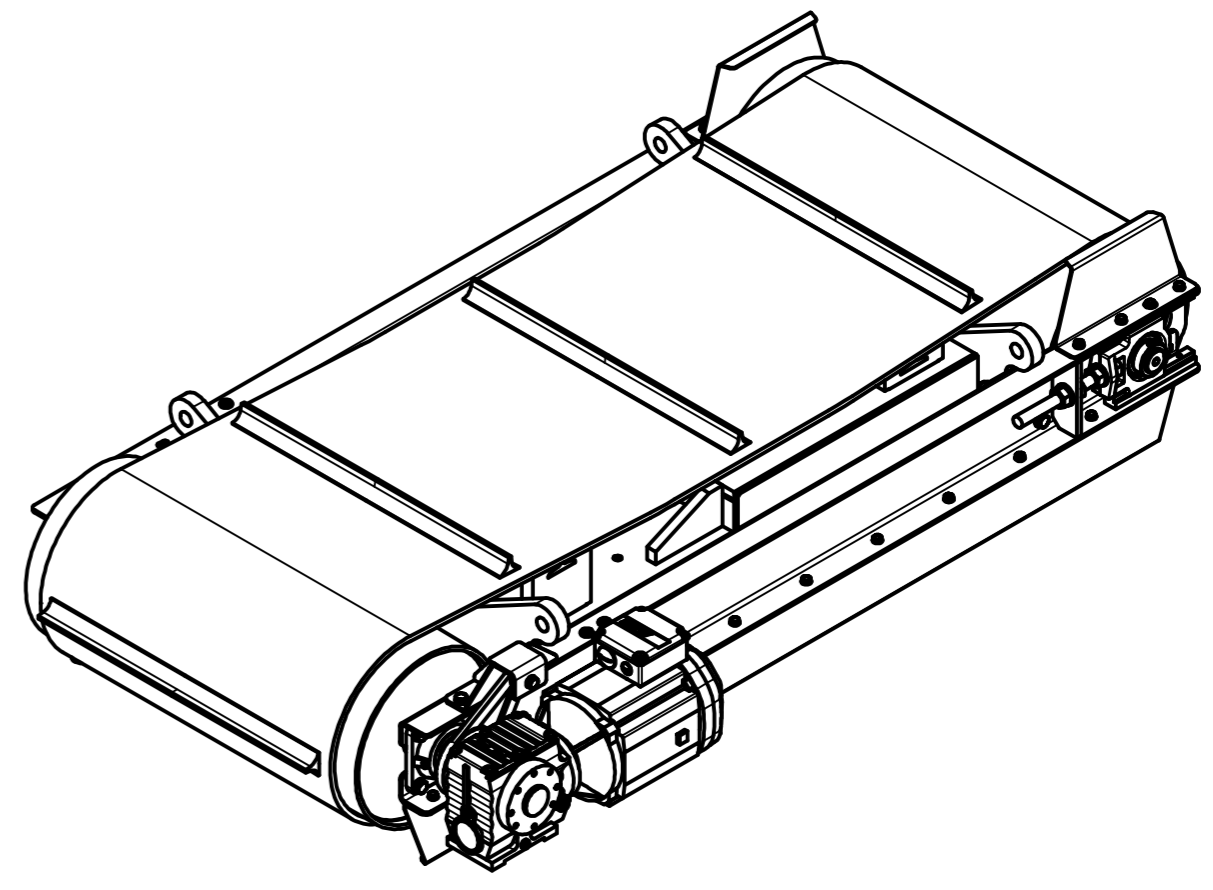
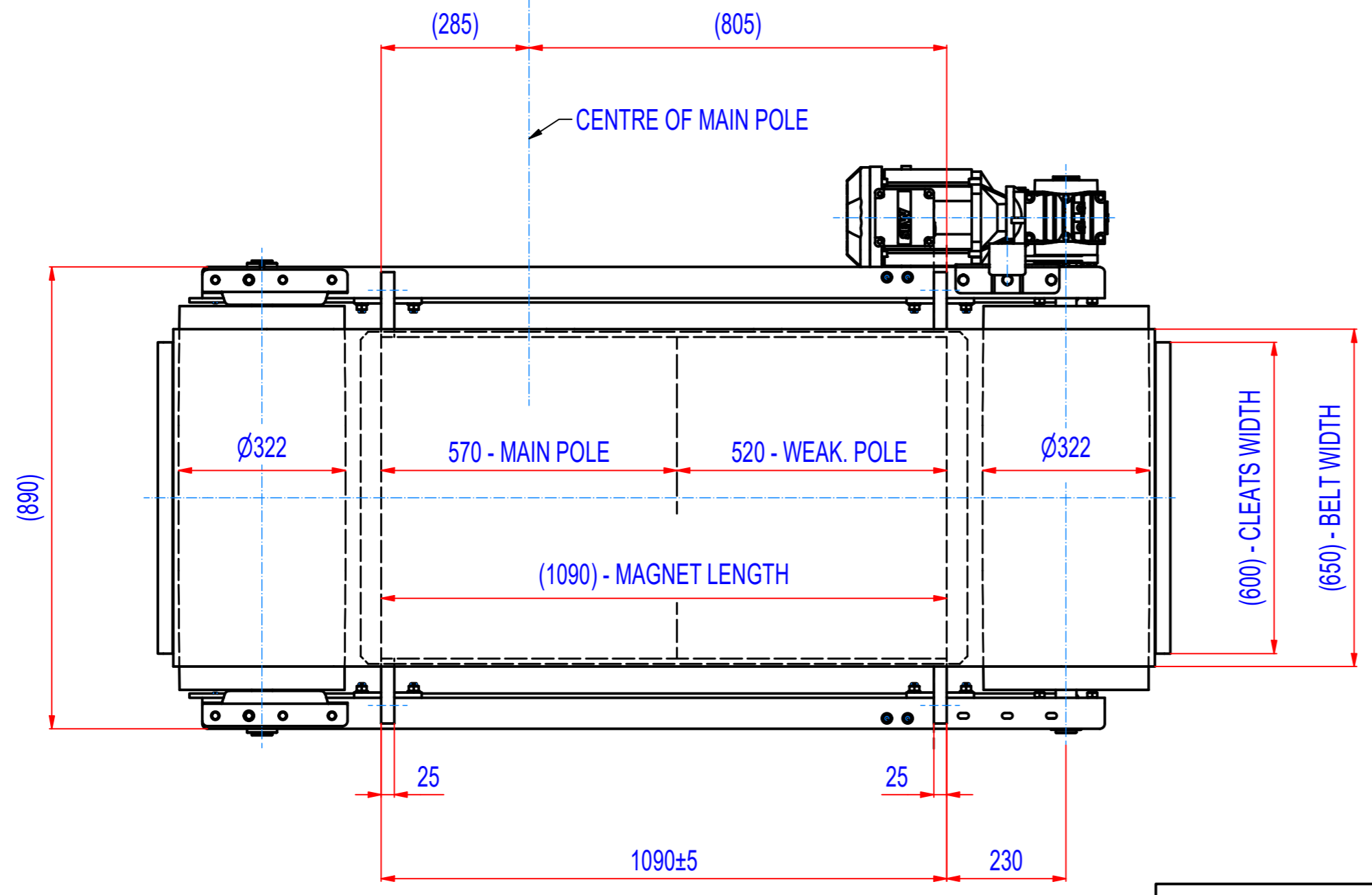
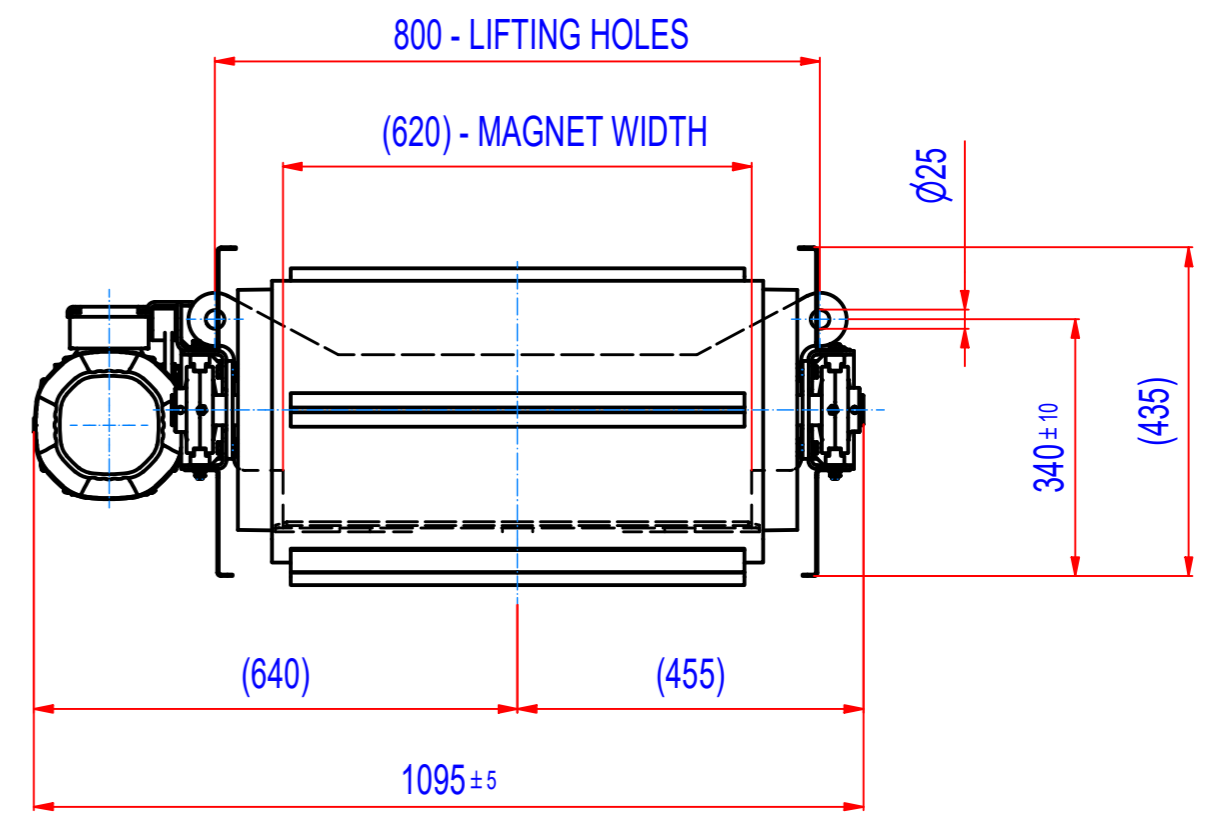
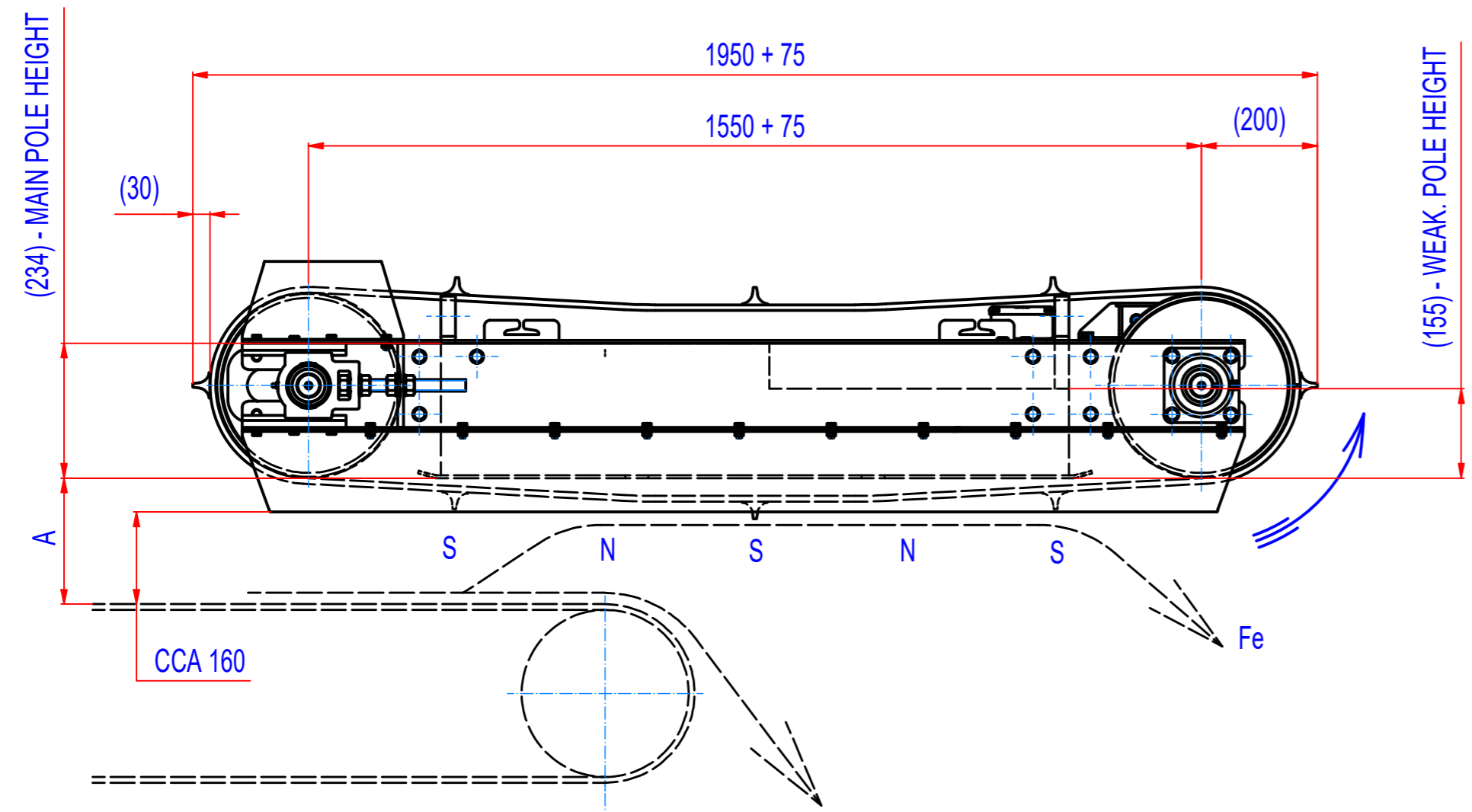


REV	DATE	BY	DESCRIPTION
-	14.09.2021	LF	ORIGINAL DRAWING



A = 310 mm - max. catch distance for rod $\phi 15$, L=75 mm (VDE)
A = 220 mm - 400 Gs

- GEARED BOX SEW SA57/TDRN100LS4, i=14,24 (102RPM), MOTOR 2,2kW, 230/400V, 50Hz, IP55
- DRUM SPEED 102/min
- BELT SPEED 1,7 m/s
- BELT EP400/3 4+2, WIDTH 650, LENGTH 4170, 8 CLEATS T30/10, WIDTH 600

Sheet: A2	Extra info:	General tolerance: ISO 2768 - cL
Drawn: LF	Weight (kg): 899.4	Drawn according: ISO268; ISO1101; ISO2553
Date: 14.9.2021		Status:
Predecessor:		Customer reference number:
Quick search: XSPB 3	<p>© All rights reserved. Reproduction is not permitted without written permission of GOUDSMIT Magnetic Systems BV</p>	Product key: ROP-F3-I-065-W-G-L-B-B-NA
Description: Overband separator, Ferrite, Size 3, W0650, Inline		Part number: ROFI065330