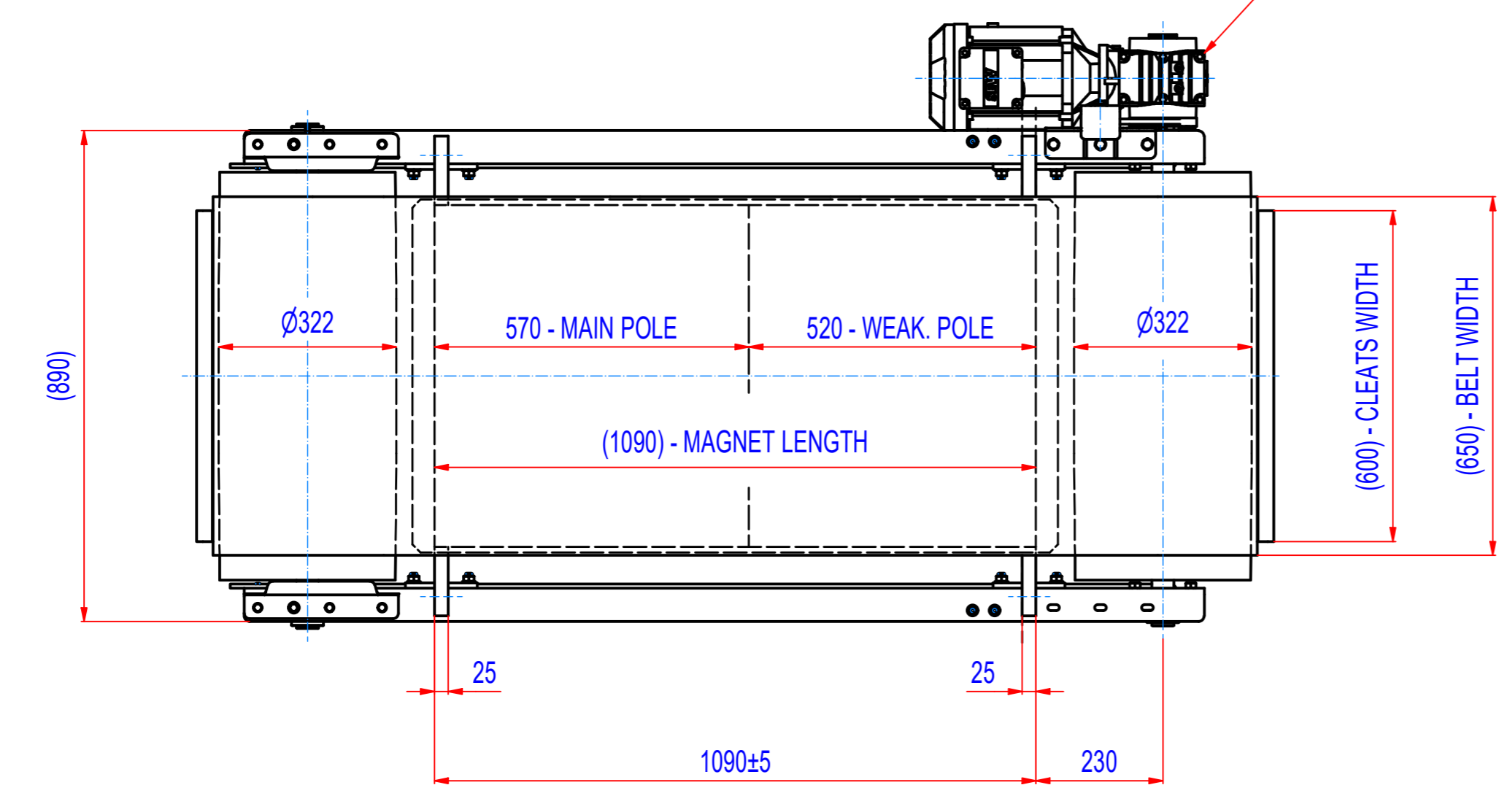
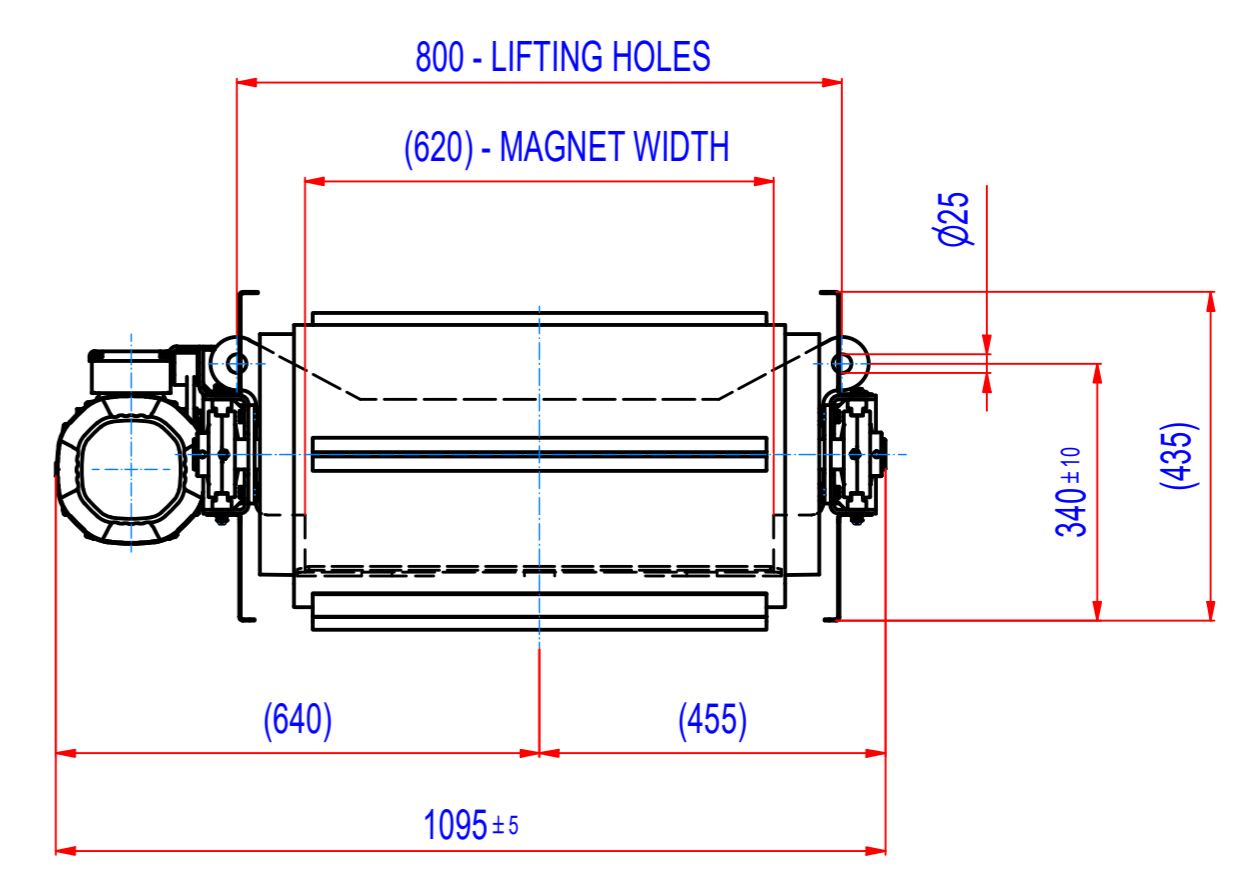
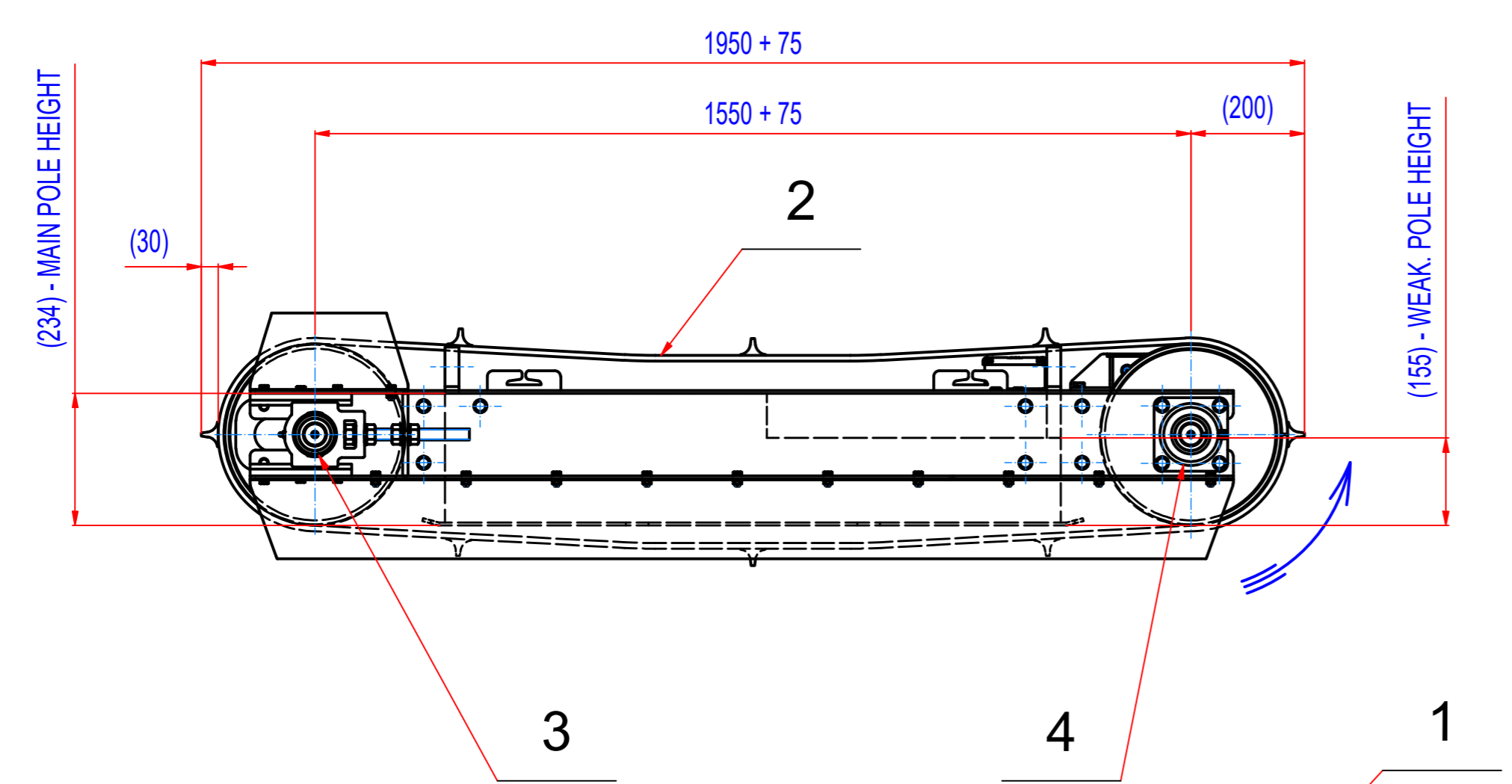


REV	DATE	BY	DESCRIPTION
-	14.09.2021	LF	PŮVODNÍ VÝKRES / ORIGINAL DRAWING
			21.04.2023 - REDUCTION IN THE NUMBER OF SPARE PARTS



- GEARED BOX SEW SA57/TDRN100LS4, i=14,24 (102RPM), MOTOR 2,2kW, 230/400V, 50Hz, IP55
 - DRUM SPEED 102/min
 - BELT SPEED 1,7 m/s
 - BELT EP400/3 4+2, WIDTH 650, LENGTH 4170, 8 CLEATS T30/10, WIDTH 600

POZ.	Č. SOUČÁSTI	POPIS	MATERIÁL	HMOT.	MN.
4	15_8700040	BEARINGS ASSEMBLY INA PCJ 40		1,9	2
3	15_8600040	BEARINGS ASSEMBLY INA PTUE 40		2,4	2
2	45_4065030	BELT EP 400/3 4+2, W=650, L=4170	RUBBER	35	1
1	MO22010003	SEW SA57/TDRN100LS4, 2,2kW, i=14,24 (102RPM)		42	1

Sheet: A2 Drawn: LF Date: 14.9.2021 Predecessor:	Weight (kg): 899.4 GOUDSMIT MAGNETICS <small>© All rights reserved. Reproduction is not permitted without written permission of GOUDSMIT Magnetic Systems BV</small>	General tolerance: ISO 2768 - cL Drawn according: ISO268; ISO1101; ISO2553 Status: Customer reference number: Product key: ROP-F3-I-065-W-G-L-B-B-NA Part number: ROFI065330_SP Rev:
Quick search: XSPB 3 Description: SPARE PARTS FOR ROFI065330		