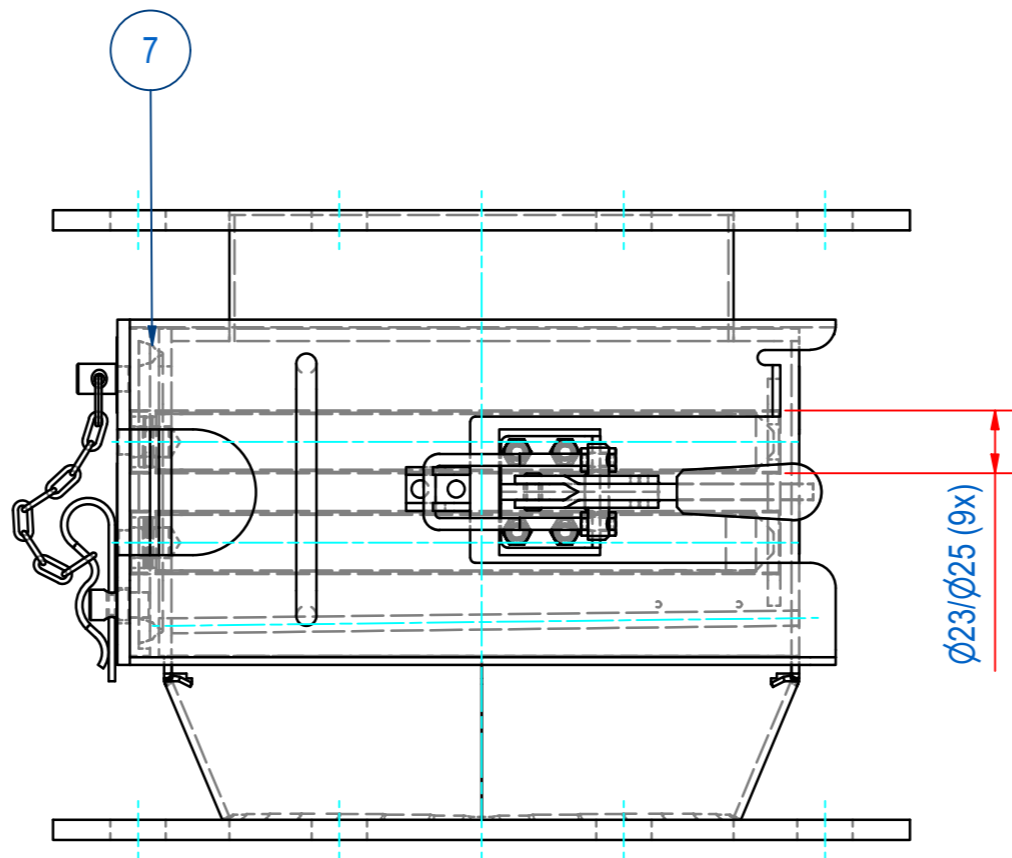
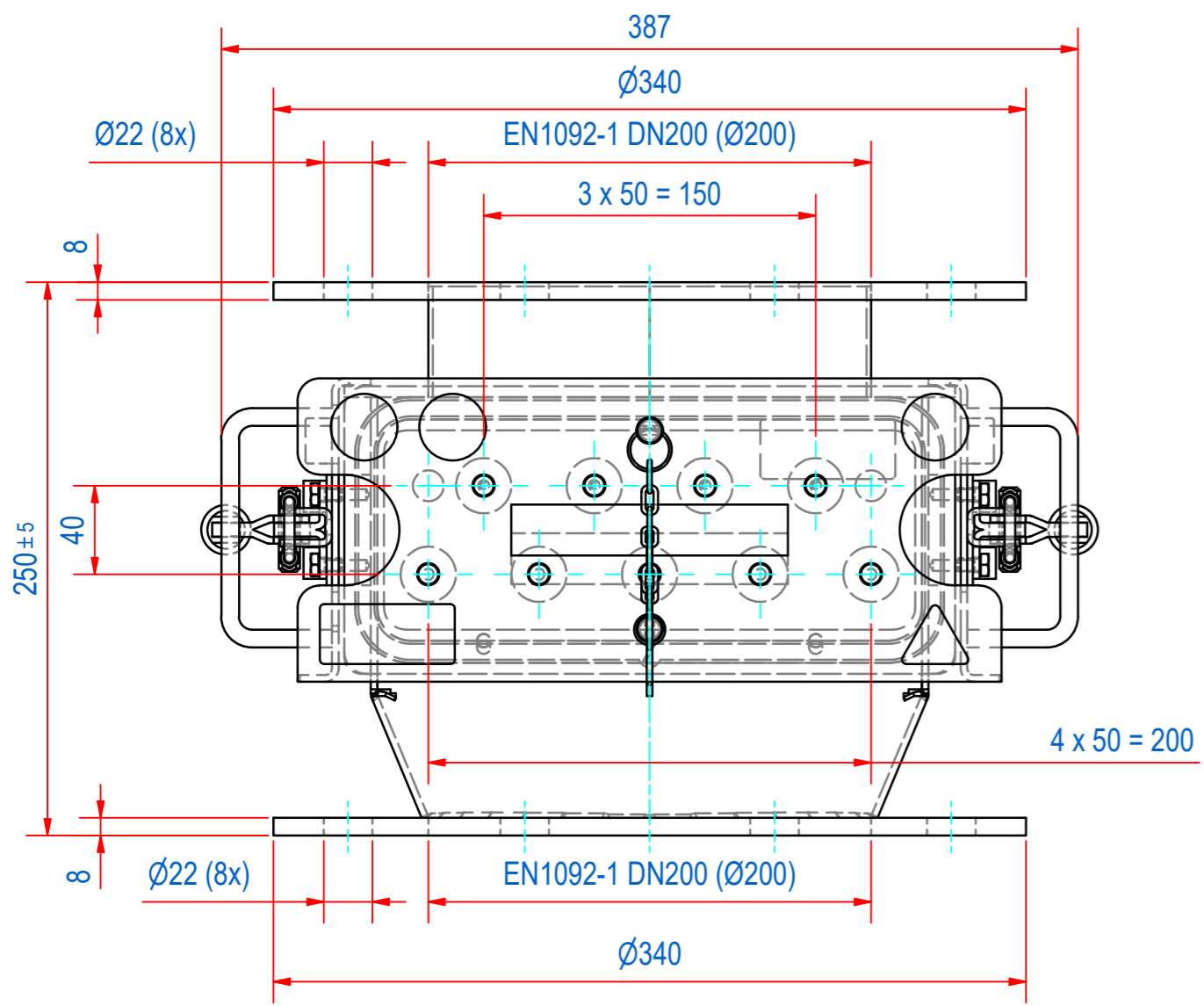
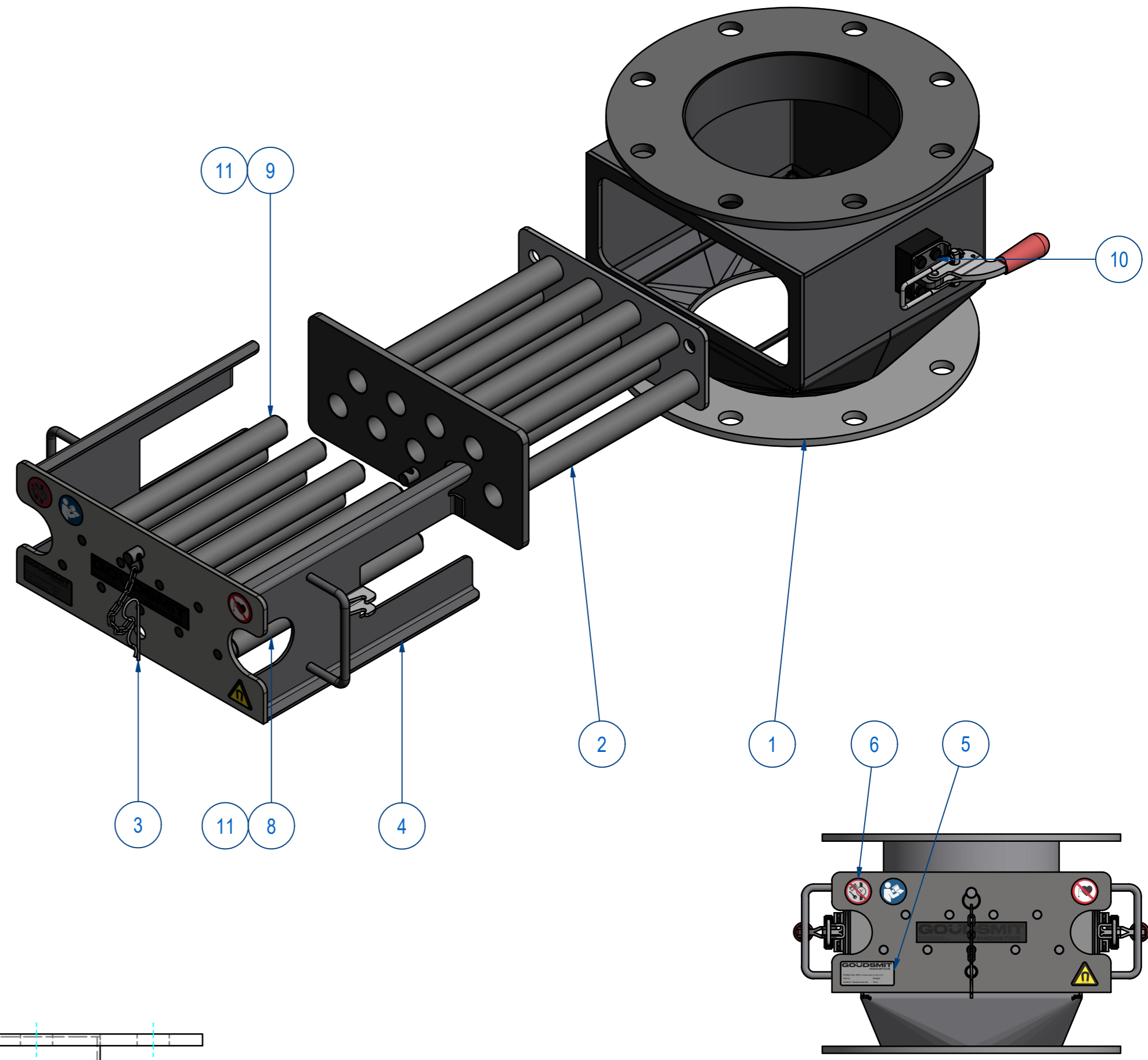
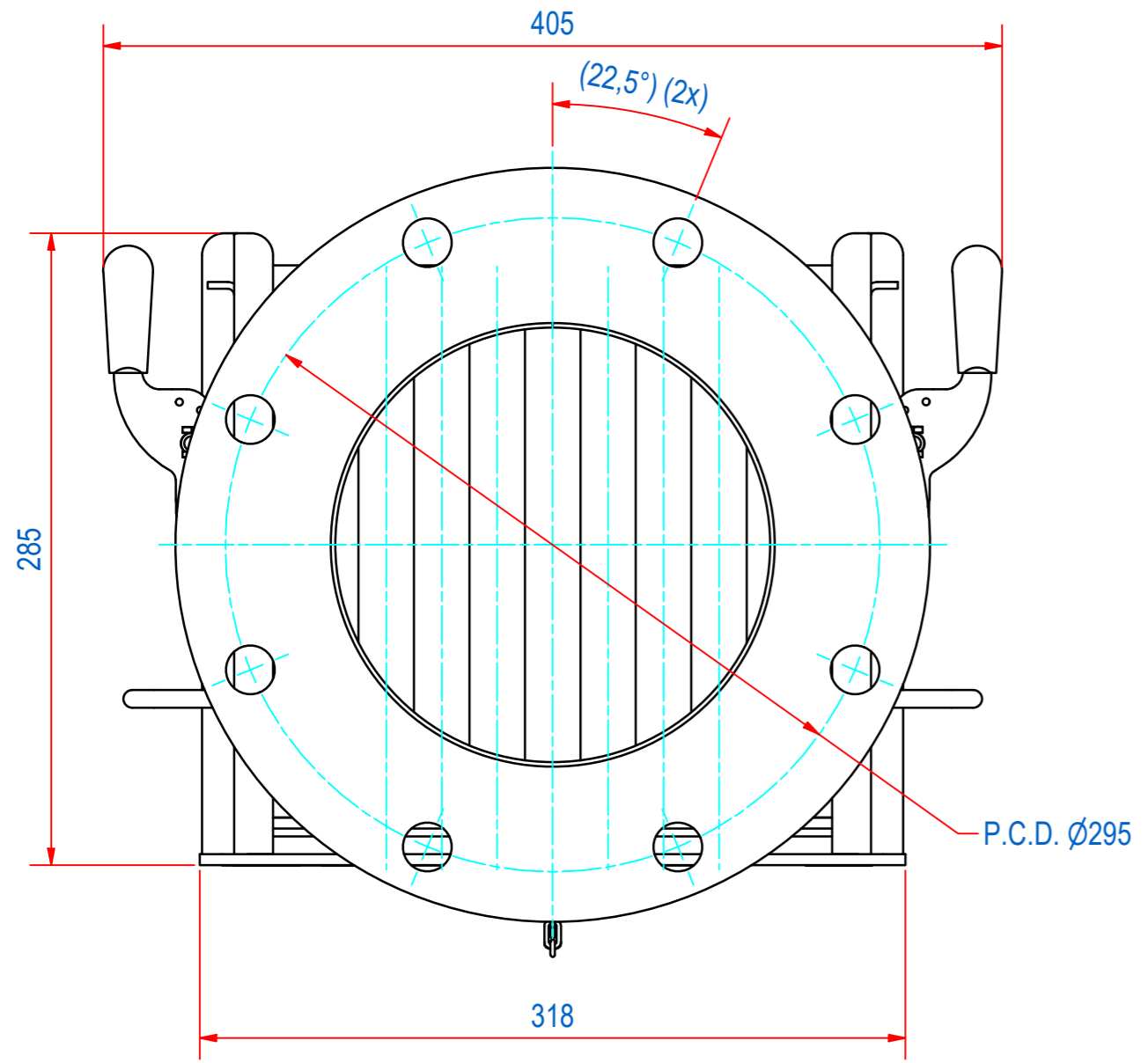


REV	DATE	BY	DESCRIPTION
-	18-7-2013	AvD	NEW REVISION VAULT, NOTHING CHANGED, OLD REV WAS G
A	12-4-2018	CR	TYPE PLATE AND WARNING STICKERS ADDED
B	11-7-2023	CR	SOURCE ADDED, GASKET (ITEM E0004379) DELETED, TRANSPARENCY TOP VIEW DELETED



ITEM	QTY	PART NUMBER	DESCRIPTION	Dimensions
11	9	72.9900002	PIN, S SLOTTED 3 x 20 - A2	3 x 20
10	8	50.1306010	BOLT, HEX M6x10-A4	M6 x 10
9	4	SBAME100009-255	BAR-N-23-255-25-CPC-SH-B	
8	5	SBAME100000-255	BAR-N-23-255-25-CPC-SW-B	
7	1	E0004380	SECF-S-200-SEAL SILI RED EC1935	
6	1	E0093454	SECF-000 STICKERS	
5	2	E0086350	SECF-000-TYPE PLATE	
4	1	A250179	SECF-S-200 FRONT INSERT	
3	1	M15489	SECF-S-LOCK WITH CHAIN "SAFE"	
2	1	A250343	SECF-S-EXTRACTOR LASER CF200	
1	1	M14903	SECF-200-WELD ASSY HOUSE	

RAW MAT.	Quantity	Material Number	Material Description	Length (mm)	Width (mm)
1	1				

Sheet: A2	Extra info:	General tolerance: ISO 2768 - mK
Drawn: CR	Weight (kg): 28	Drawn according: ISO286; ISO1101; ISO2553
Date: 12-7-2019		Status: Standard
Spare part: False	Source: MC-C	Customer reference number:
Quick search: CF200NB		
Description: SECF-B-D200-09E-N-F1E-W-B-B	Document number: SEFC200638	Doc.Rev: B
	Part number: SECF200638	Rev: B