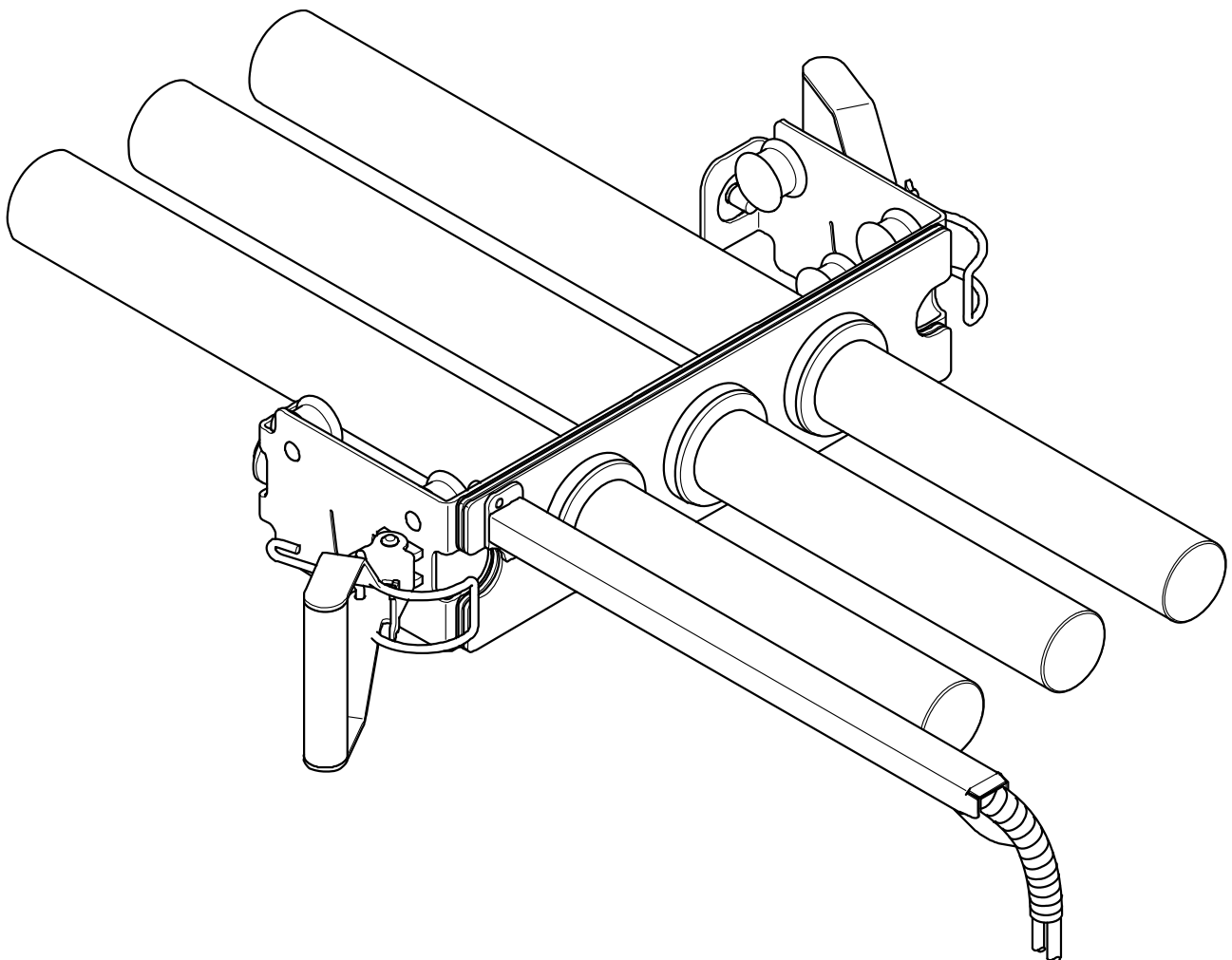


Installation manual

Replacing the magnetic unit SECE Cleanflow magnet

Descriptions and drawings in this manual are used for explanation purposes and can differ from your version. The as-built drawing(s) of the ordered device are included.



© Copyright. All rights reserved.

Table of contents

1 Preface 4

2 Standards and regulations 5

2.1 Occupational and public exposure limit values for (electro) magnetic fields..... 5

3 Safety..... 7

3.1 General safety instructions..... 7

4 Changing the magnetic unit 8

4.1 Dismantling 8

4.2 Mantling..... 9

1 Preface

This manual contains information for the correct replacing of the magnetic unit. This manual contains instructions on how to avoid possible injuries or damage and provides a safe and trouble free operation of the magnetic unit. Please read this manual thoroughly and make sure that you have understood everything before installing and commissioning the magnetic unit.

For more information, please contact Goudsmit Magnetic Systems B.V.. All contact information is on the title page of this manual. Please refer to the order number, the name of the device and/or article number to re-order the manual.



NOTICE

Read this manual carefully before installation and commissioning!

The descriptions and figures in this manual, provided for explanatory purposes, may differ from the descriptions and figures of your version.



NOTICE

This manual and manufacturer's declaration(s) are to be considered part of the device. Both documents must remain with this device if it is sold.

The manual must be available to all operating personnel, service technicians and others who work with the device throughout the life of the device.

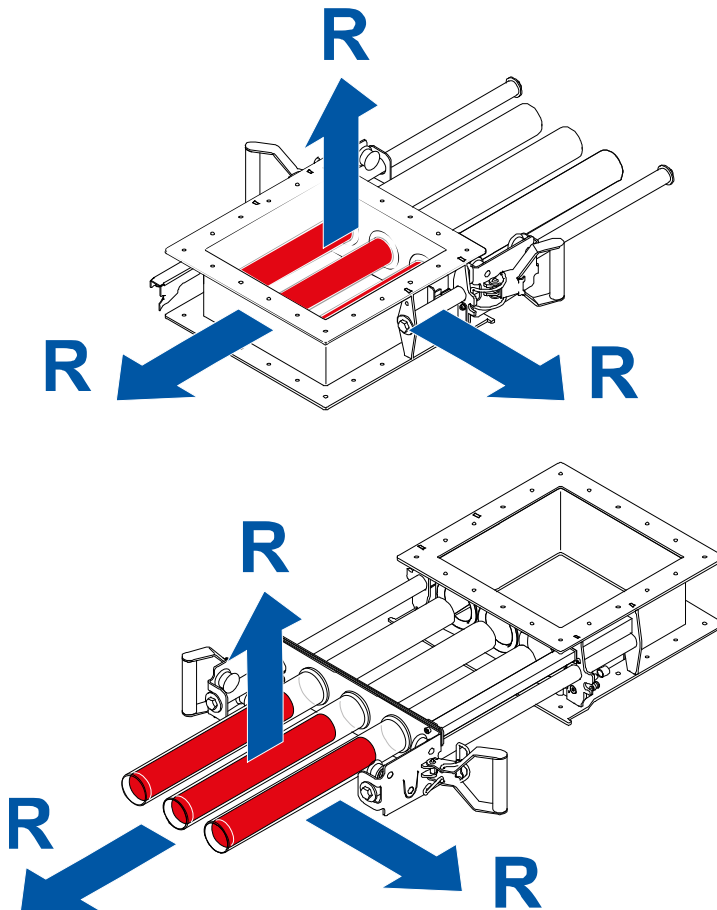
2 Standards and regulations

2.1 Occupational and public exposure limit values for (electro) magnetic fields

The limit values and magnetic fields are defined in accordance with the EMC Directive 2013/35/EU as follows:

Directive 2013/35/EU of the European Parliament and of the Council of 26 June 2013 on the minimum health and safety requirements regarding the exposure of workers to the risks arising from physical agents (electro-magnetic fields).

Observe the following measures in relation to exposure to magnetic fields in accordance with EN12198-1 (machine category = 0, no restrictions) of the device:



Life-threatening danger to people with implanted medical aids

People with an active implanted medical aid (e.g. pacemaker, defibrillator, insulin pump) may never be present within a radius 'R' of 0.25 metre(s) of the device.



Damage to products with sensitivity to magnets

Products that contain ferromagnetic parts, such as debit cards, credit or chip cards, keys and watches, may be rendered permanently damaged if they come within a radius 'R' of 0.1 metre(s) of the device.



Employees who are pregnant and the general public may not come within a radius 'R' of 0.04 metre(s) of the device.



WARNING

Projectile hazard

Ferromagnetic objects will be attracted if they come within a radius of 0.3 metre of the magnet.

Occupational exposure limit values (general and for limbs) are not exceeded.

3 Safety



NOTICE

Observe the following measures:

- ▶ Read the warning pictograms on the device carefully.
- ▶ Check that the pictograms on the device are present and legible at regular intervals.
- ▶ Keep the pictograms clean.
- ▶ Replace pictograms that have become illegible or that have been removed with new pictograms in the same locations.

3.1 General safety instructions

- The instructions in this manual must be followed. If not, material damage, physical harm or life threatening situations may occur.
- Make sure all personnel working with or in the direct vicinity of the device are wearing sufficient safety equipment.
- All work on the device must only be done by qualified personnel. Preferably have maintenance on the magnets carried out by personnel from Goudsmit Magnetics.
- Always apply local safety and environmental regulations.



WARNING

Attraction by strong magnetic field

The magnets create a strong magnetic field that attracts ferromagnetic parts. Always use none ferromagnetic tools and work benches with a wooden counter top and a none ferro-magnetic base. Do not bring any other ferromagnetic items, such as keys, coins and tools, into the magnetic field as they can be forcefully attracted by the magnet, which can cause serious damage.



WARNING

Injury caused by strong magnetic field

During maintenance and measuring checks of the magnet components of the magnet bars, injuries can occur. Make sure your fingers can not get caught between the components.

4 Changing the magnetic unit

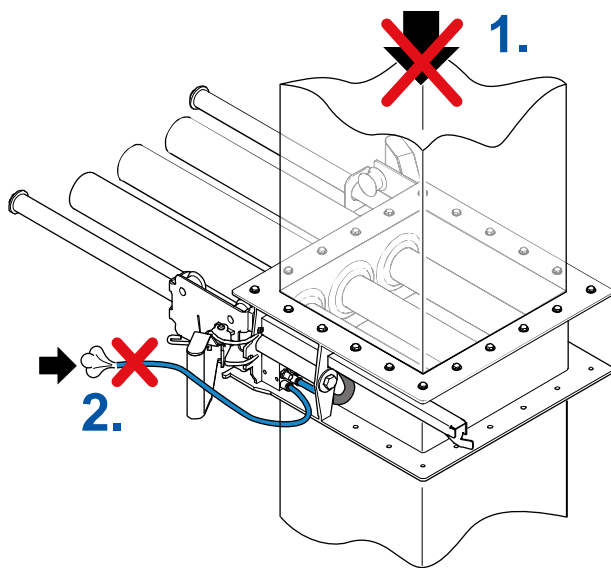


NOTICE

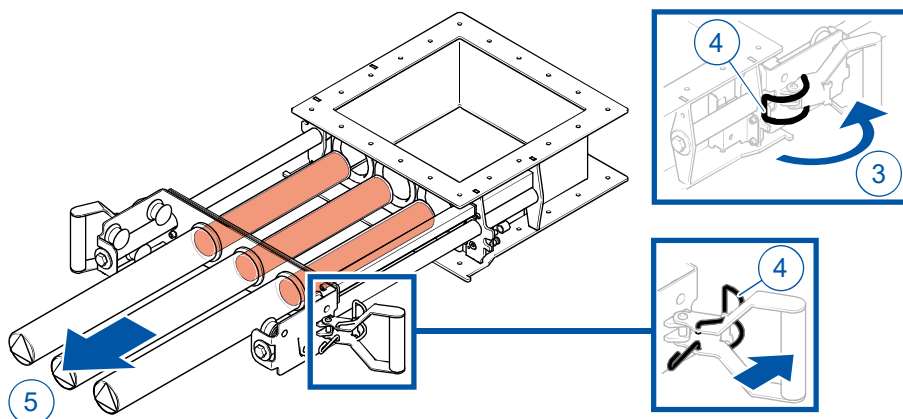
Take the following precautions:

- ▶ Only allow qualified personnel to work on the installation.
- ▶ Disconnect the compressed air supply when working on the device.
- ▶ Make sure that there is at least 1 meter of free space around the installation to be able to replace the magnetic unit.

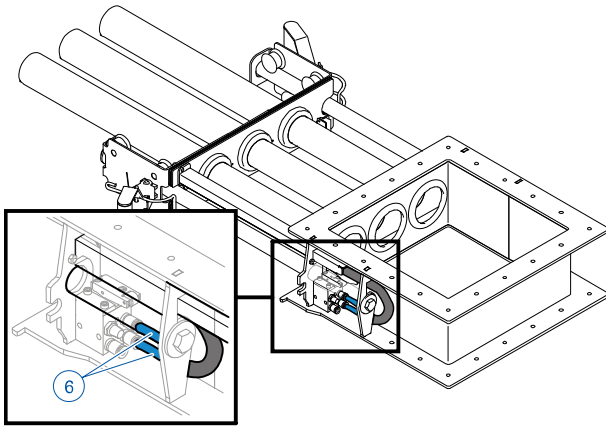
4.1 Dismantling



- Stop the product flow [1].
Wait a few seconds until no more product material flows through the product channel.
- Stop the compressed air supply to the solenoid valve [2].



- Loosen the two handles with safety spring (additionally with retaining clips) [3].
- Push the handles forwards as far as possible until the safety spring [4] engages in the handle.
- Then pull the handles back so that the magnetic unit is unlocked.
- Pull the magnetic unit by the handles - over the guide bars - completely out of the device into its outermost position [5].

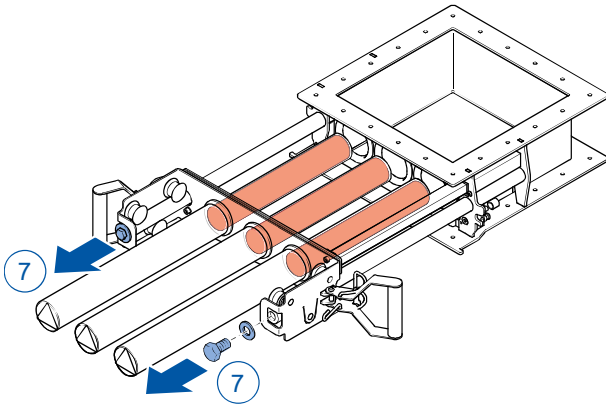


NOTICE

If the magnetic unit is delivered without air hoses:

► Mark both air hoses and connection fittings before disassembly.

- Disconnect both air hoses [6] from the solenoid valve.



- For your own safety, check with a small iron object where in the tubes the magnetic packages are now located.
- Dismantle the two bolts with washer [7] at the end of the guide bars.
- Slide and lift the complete magnetic unit off the guide bars with 2 persons and place the magnetic unit on a wooden or plastic depository.

Make sure that the disconnected air tubes do not get caught behind the bracket.

4.2 Mantling

- Place the new magnetic unit on the guide bars.
- Reassemble all parts in reverse order.
- Switch the compressed air supply back on. Activate a cleaning cycle to check whether the air hoses are connected to the correct connectors of the solenoid valve.
- Production can now safely be resumed.



